



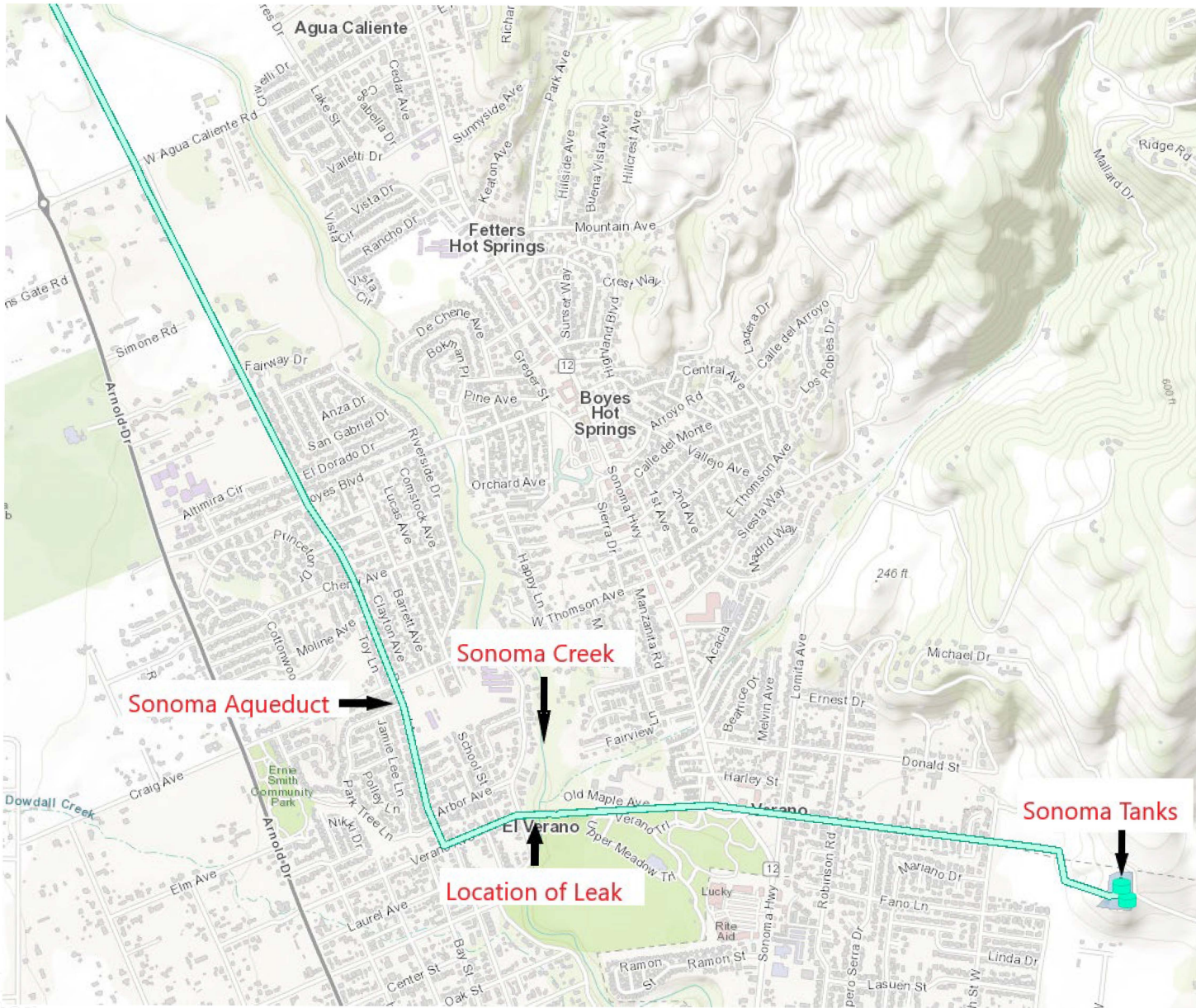
# Sonoma Water

Clean. Reliable. Essential. Every Day.

## Sonoma Aqueduct Leak at Verano Avenue Bridge

David Royall  
Maintenance Manager  
Sonoma Water  
521-1892 (O)  
495-6108 (C)







Senoma  
Water



Sonoma  
Water



Sonoma  
Water



Sonoma  
Water



Senoma  
Water

# NEXT STEPS:

## Sonoma Water:

- Procure remaining materials
- Provide scheduling to stakeholders
- Top off Sonoma Tanks
- Shut down and dewater aqueduct

## Contractor:

- Excavate and install new 16-inch valve and T assembly
- Excavate and remove failed valve and replace with pipe
- Backfill





**Sonoma  
Water**

David Royall  
Maintenance Manager  
Sonoma Water  
521 1892 (O)  
495 6108 (C)



[sonomawater.org](http://sonomawater.org)